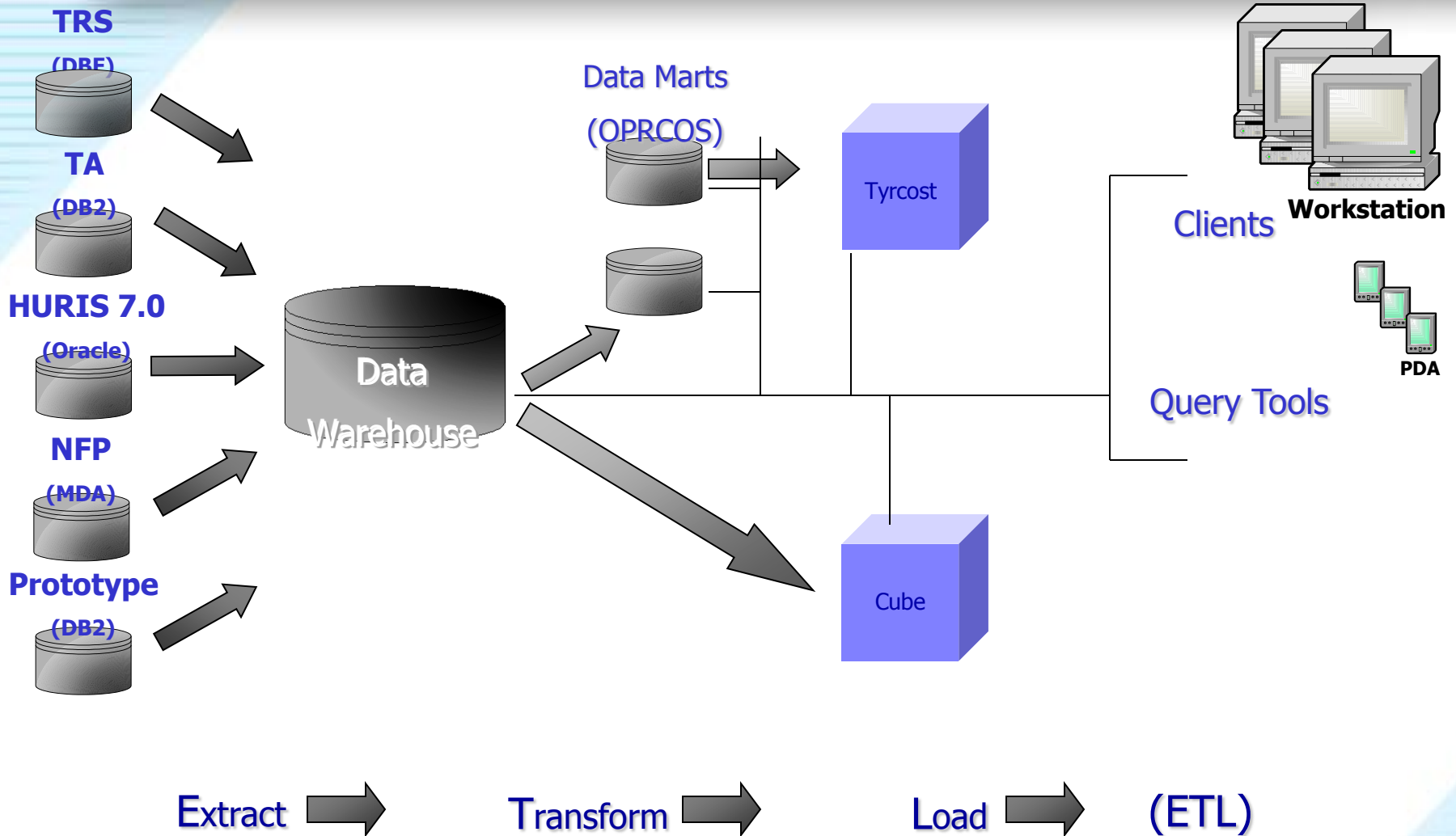


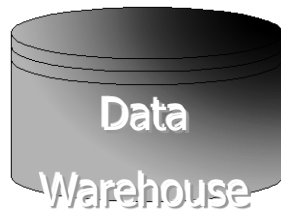
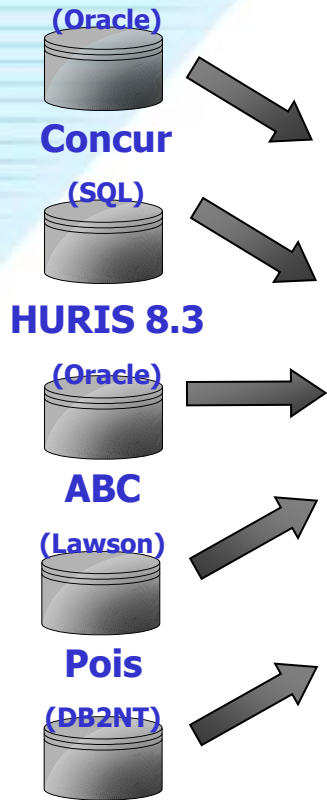
Data Wizard

IDB's first Data warehouse (2001)

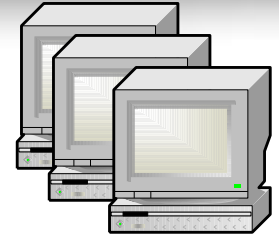
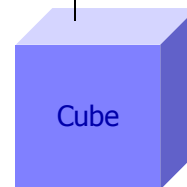
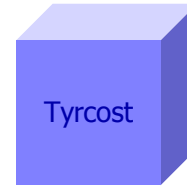
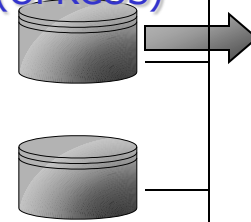


IDB's Data warehouse (2005)

Time & Labor



Data Marts (OPRCOS)



Clients



Query Tools

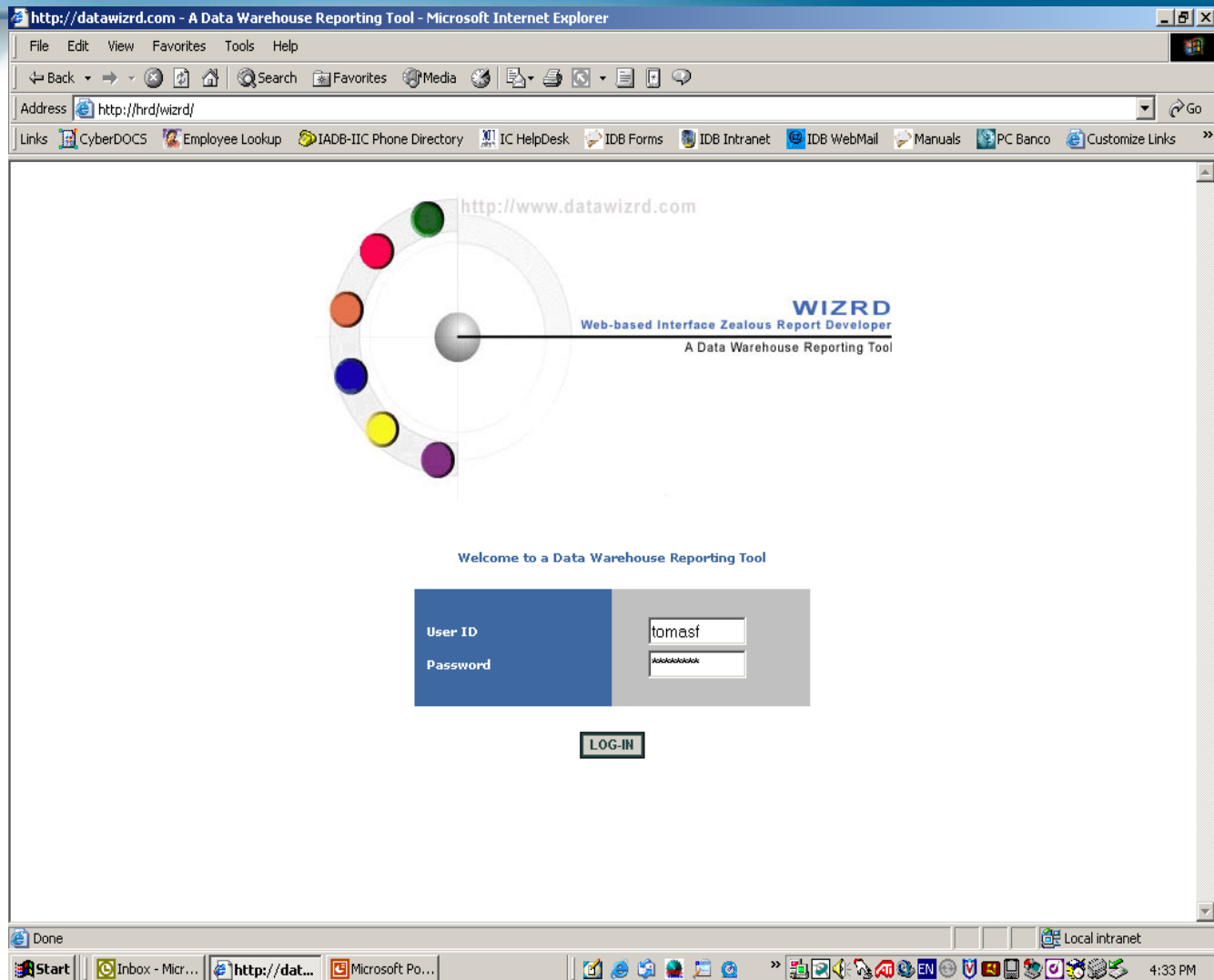
Extract →

Transform →

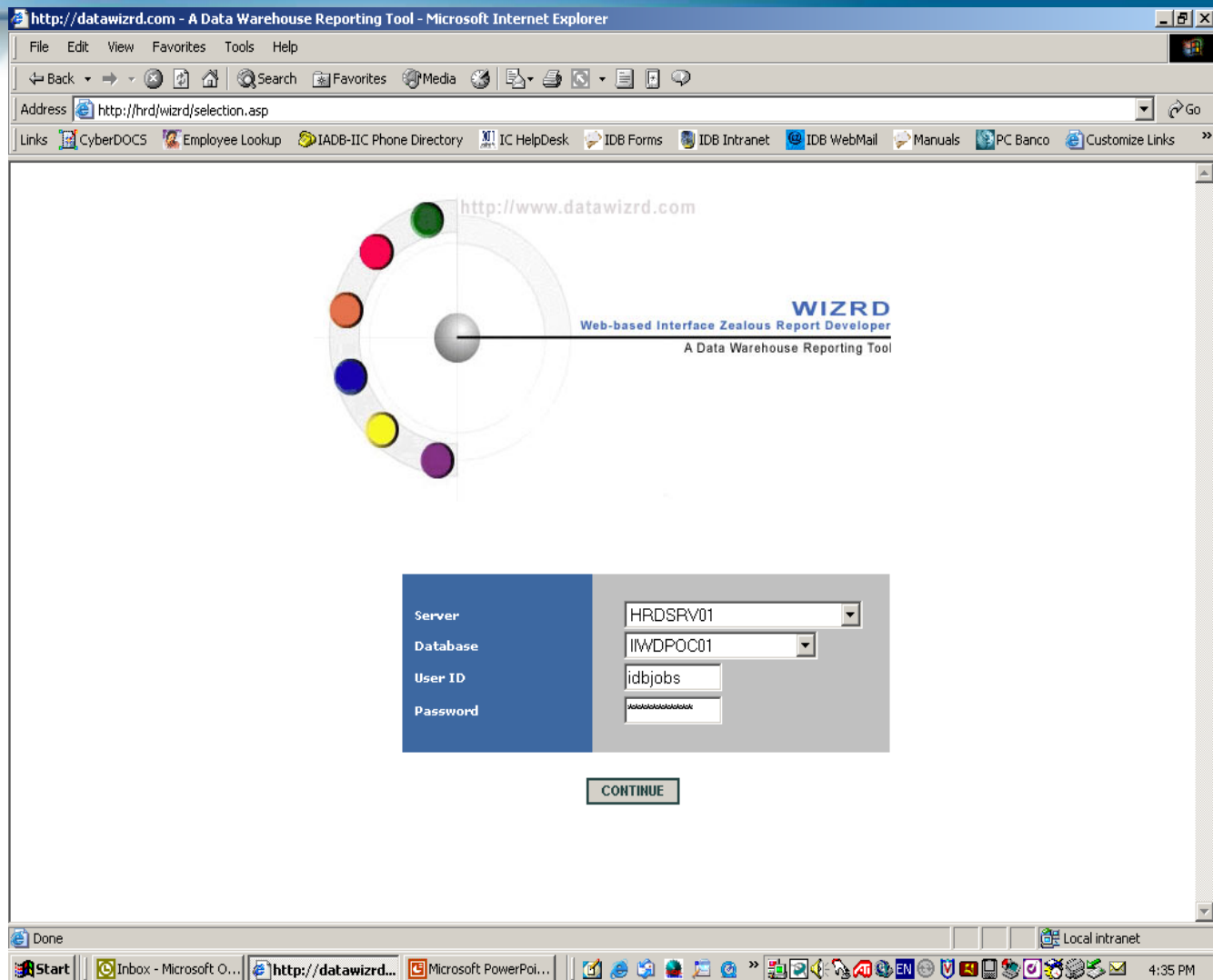
Load →

(ETL)

Data Wizard main page



Data Base selection



Table/View selection

The screenshot shows a Microsoft Internet Explorer browser window displaying the WIZRD web interface. The address bar shows the URL `http://hrd/wizrd/Seltable.asp`. The page content includes a logo with seven colored circles (green, red, orange, blue, yellow, purple, grey) and the text "WIZRD Web-based Interface Zealous Report Developer A Data Warehouse Reporting Tool". Below this, the connection details are listed: "2005 WIZRD", "Table Selection", "Server HRDSRV01", and "Database IIWDPOC01". A "TABLE SELECTION" dialog box is open, showing a list of tables and views. The table `VTCPROGRAM_2005_DENORM` is selected. A "CONTINUE" button is located at the bottom of the dialog box.

http://www.datawizrd.com

WIZRD
Web-based Interface Zealous Report Developer
A Data Warehouse Reporting Tool

2005 WIZRD
Table Selection
Server HRDSRV01
Database IIWDPOC01

TABLE SELECTION

VTCHARMONIZATION
VTCLNEXE
VTCP00REST_SR
VTCPROGRAM_2005
VTCPROGRAM_2005_DENORM
VTCPUP05
VTCPUP05_090705_APPR
VTEAMLEADER

CONTINUE

Done Local intranet

Start Inbox - Microsoft O... http://datawizrd... Microsoft PowerPoi... 4:36 PM

Field selection for Reporting

The screenshot shows a Microsoft Internet Explorer browser window displaying the WIZRD web interface. The address bar shows the URL <http://hrd/wizrd/SelRecords.asp>. The browser's menu bar includes File, Edit, View, Favorites, Tools, and Help. The address bar also contains navigation buttons (Back, Forward, Stop, Home, Search, Favorites, Media) and a Go button. The Links bar includes CyberDOCS, Employee Lookup, IADB-IIC Phone Directory, IC HelpDesk, IDB Forms, IDB Intranet, IDB WebMail, Manuals, PC Banco, and Customize Links.

The main content area features a logo consisting of a semi-circle of colored dots (green, red, orange, blue, yellow, purple) and a central grey sphere. To the right of the logo, the text reads: **WIZRD**
Web-based Interface Zealous Report Developer
A Data Warehouse Reporting Tool

Below the logo, the text indicates: **2005 WIZRD**
Records Selection
Server **HRDSRV01** - Table: **VTCPROGRAM_2005_DENORM**
Database **IIWDPOC01**

A "FIELDS SELECTION" dialog box is open, displaying a list of fields: COUNTRY_GROUP, DEPARTMENT, DESC1, DESC2, ENGLISH_NAME, FUND1, FUND2, and OPER1. The "CONTINUE" button is visible at the bottom of the dialog.

The Windows taskbar at the bottom shows the Start button, several open applications (Inbox - Microsoft O..., http://datawizrd..., Microsoft PowerPoi...), and the system tray with the time 4:38 PM and the text "Local intranet".

Field selection verification

http://www.datawizrd.com

WIZRD
Web-based Interface Zealous Report Developer
A Data Warehouse Reporting Tool

2005 WIZRD
Table and Record Description
SQL Server HRDSRV01

OK!! You choose

Table:
VTCPROGRAM_2005_DENORM

Records: **AMT1, APR_DATE,
COUNTRY, DEPARTMENT,
ENGLISH_NAME, FUND1,
OPERATION_NUMBER,
PIPE_YEAR, SECTOR_CODE,
USEQ_AMOUNT**

If you agree click on CONTINUE

CONTINUE

Data Analyzer creation

http://www.datawizrd.com

WIZRD
Web-based Interface Zealous Report Developer
A Data Warehouse Reporting Tool

Web-based Interface Zealous Report Developer
Server: HRDSRV01 - Database: IIWDP0C01 - Table: VTCPROGRAM_2005_DENORM

AMT1	APR_DATE	COUNTRY	DEPARTMENT	ENGLISH_NAME
ALL 1100 4200	ALL 1/3/2005 1/5/2005	ALL AR BA	ALL DEV INT	ALL Poverty Reduction A Comprehensive Assessment of Transboundary Conservation Opportunities in LAC

FUND1	OPERATION_NUMBER	PIPE_YEAR	SECTOR_CODE	USEQ_AMOUNT
ALL BCF CCT	ALL AR-T1011 BA-T1002	ALL 2005	ALL AG CE	ALL 1100 4200

Process Query

Data Analyzer query result

http://datawizr.com - A Data Warehouse Reporting Tool - Microsoft Internet Explorer

Address: http://hrd/wizr/query.asp

Links: CyberDOCS Employee Lookup IADB-IIC Phone Directory IC HelpDesk IDB Forms IDB Intranet IDB WebMail Manuals PC Banco Customize Links

WEB-BASED INTERFACE ZEALOUS REPORT DEVELOPER - << Number of >> 332

AMT1	APR_DATE	COUNTRY	DEPARTMENT	ENGLISH_NAME	FUND1	OPERATION_NUMBER	PIPE_YEAR	SECTOR_CODE	USEQ_AMOUNT
1100	8/25/2005	EC	RE3	Industrial Sinergy, BORSI - Colombia	FSO	EC-T1043	2005	PA	1100
4200	3/30/2005	EC	RE3	Support for the Creation of "Bolsa de Valores Sociales"	FSO	EC-T1039	2005	CM	4200
5000	5/12/2005	CH	RE1	Support to the General Comptroller Office of Chile	FSO	CH-T1007	2005	RM	5000
5800	3/11/2005	GU	RE2	Support Violence Prevention Program	FSO	GU-T1023	2005	IS	5800
5996	1/11/2005	PN	RE2	Training in Institutional and Operative Process of Road Fund Program	FSO	PN-T1005	2005	TR	5996
7000	4/29/2005	RS	SDS	Mainstreaming Gender in Water Management	NWP	RS-T1099	2005	PA	7000
8078	3/10/2005	PE	RE3	Boarder Crossing Points	FSO	PE-T1018	2005	CE	8078
8500	7/25/2005	EC	RE3	Training Visits Neighborhood Improvement Programas	FSO	EC-T1041	2005	IS	8500
10880	1/7/2005	JA	RE3	Study Tour by Ministry of Local Government,Community Development & Sport	FSO	JA-T1012	2005	RM	10880
11764	4/12/2005	PE	RE3	Monetary Transfers Program	FSO	PE-T1020	2005	IS	11764
12000	1/21/2005	PR	RE1	Programs of Districts Improvement	FSO	PR-T1024	2005	DU	12000
12000	6/27/2005	GU	RE2	Support for Consolidation of Fiscal Pact	FSO	GU-T1031	2005	RM	12000
12300	8/8/2005	RS	RE1	Operative Assistant RE1/FI1	ITI	RS-T1192	2005	PS	12300
15000	2/11/2005	CH	RE1	Good Practices in Development	FSO	CH-T1006	2005	RM	15000
18000	7/18/2005	RS	SDS	Women and Democratic Governance in Latin America and the Caribbean	NOW	RS-T1176	2005	IS	18000
19293	6/2/2005	BO	RE1	CT/INTRA Assistance for the Judiciary Branch of Bolivia	FSO	BO-T1028	2005	RM	19293
19500	7/6/2005	PN	RE2	National Secretariat for the Social Inclusion of People with Disabilities	FSO	PN-T1013	2005	IS	19500
19646	6/17/2005	CR	RE2	Improvements on the Judicial Management Reform	FSO	CR-T1012	2005	RM	19646
19980	6/10/2005	BH	RE3	Social Safety Net Program Experiences	FSO	BH-T1005	2005	IS	19980
20000	2/1/2005	BR	RE1	Institutional Strengthening of Controlling Agencies	FSO	BR-T1026	2005	RM	20000
20000	3/10/2005	RS	SDS	Private Investment Obstacles: Options of Growth with Equity	FGE	RS-T1138	2005	PS	20000
20000	5/11/2005	SU	RE3	Support Suriname Country Strategy Paper -Development Policy Note on Indigenous	NSI	SU-T1015	2005	IS	20000
20000	7/18/2005	CH	RE1	Disabilities' Challenges in the Chilean Legislation and Policy	NSI	CH-T1009	2005	IS	20000
20000	8/15/2005	RG	INT	Youth Development in Latin America and the Caribbean	FSO	RG-T1181	2005	IS	20000
20000	11/15/2005	PE	RE3	Technical Note on Ethnic Groups and Social Exclusion in Peru	NSI	PE-T1029	2005	IS	20000
25000	1/3/2005	RS	SDS	Improving Disability Data in the Andean Region and the Caribbean	NSI	RS-T1123	2005	IS	25000

Done

Local intranet

Start | Inbox - Microsoft O... | http://datawizr... | Microsoft PowerPoi... | 4:41 PM

Drill-down to Project profile


http://datawizr.com - A Data Warehouse Reporting Tool - Microsoft Internet Explorer

File Edit View Favorites Tools Help

Back Forward Stop Home Search Favorites Media Print Copy Paste

Address http://hrd/wizr/query.asp Go

Links CyberDOCS Employee Lookup IADB-IIC Phone Directory IC HelpDesk IDB Forms IDB Intranet IDB WebMail Manuals PC Banco Customize Links

PROJECT INFORMATION		PLANNED AND ACTUAL DATES (DELAYED)			
Project Number	BR0302	Profile I	9/8/1999		
Project Name	Transporte Urbano de Fortaleza	Profile II	10/12/2001		
Guarantor	REPUBLICA FEDERATIVA DO BRASIL	CRG	9/22/2003		
Executor	PREFECTURA MUNICIPAL DE FORTALEZA	Loan Committee	10/16/2003		
Borrower	PREFECTURA MUNICIPAL DE FORTALEZA	EVP			
Project Type	PESP	Approval			
Country Group	A	COUNTRY LOCATION MAP			
Department/Unit	RE 1 FI1				
Pipeline Year	2004				
Category	A				
Environment Class					
Document					
Sector	TR-TMU				
PROJECT COST (in US\$ millions)					
Project Cost	\$142.00				
IDB Financing				BANKS STRATEGY	
Local Contribution	\$57.50			PTI GEO	No
TEAM LEADER AND SPECIALISTS		PTI BEN			
COF Specialist (2)		PELOSI Amendment			
Team Member (1)		CRG approval process			
Team Member (2)		Loan Committee approval process			
PROJECT NUMBER	YEAR	TRS HOURS	ESTIMATED COST		
BR0302	1998	63.54	\$24,298.98		
BR0302	1999	812.99	\$111,399.61		
BR0302	2000	750.35	\$112,368.76		
BR0302	2001	522.98	\$57,432.58		
BR0302	2002	656.07	\$94,478.48		
BR0302	2003	959.16	\$93,656.97		
COST PER HOUR		TOTAL	TOTAL		
\$131.11		3,765.09	\$493,635.38		

Done Local intranet

Start Inbox - Microsoft O... http://datawizr... Microsoft PowerPoi... 4:41 PM

Option to download to Excel

http://datawizr.com - A Data Warehouse Reporting Tool - Microsoft Internet Explorer

Address: http://hrd/wizr/query.asp

Links: CyberDOCS Employee Lookup IADB-IIC Phone Directory IC HelpDesk IDB Forms IDB Intranet IDB WebMail Manuals PC Banco Customize Links

WEB-BASED INTERFACE ZEALOUS REPORT DEVELOPER - << Number of >> 332

AMT1	APR_DATE	COUNTRY	DEPARTMENT	ENGLISH_NAME	FUND1	OPERATION_NUMBER	PIPE_YEAR	SECTOR_CODE	USEQ_AMOUNT
1100	8/25/2005	EC	RE3	Industrial Sinergy, BORSI - Colombia	FSO	EC-T1043	2005	PA	1100
4200	3/30/2005	EC	RE3	Support for the Creation of "Bolsa de Valores Sociales"	FSO	EC-T1039	2005	CM	4200
5000	5/12/2005	CH	RE1	Support			2005	RM	5000
5800	3/11/2005	GU	RE2	Support			2005	IS	5800
5996	1/11/2005	PN	RE2	Training Fund Pr			2005	TR	5996
7000	4/29/2005	RS	SDS	Mainstr			2005	PA	7000
8078	3/10/2005	PE	RE3	Boarder			2005	CE	8078
8500	7/25/2005	EC	RE3	Training			2005	IS	8500
10880	1/7/2005	JA	RE3	Study T Develop			2005	RM	10880
11764	4/12/2005	PE	RE3	Moneta			2005	IS	11764
12000	1/21/2005	PR	RE1	Progar			2005	DU	12000
12000	6/27/2005	GU	RE2	Support			2005	RM	12000
12300	8/8/2005	RS	RE1	Operati			2005	PS	12300
15000	2/11/2005	CH	RE1	Good P			2005	RM	15000
18000	7/18/2005	RS	SDS	Womer the Car			2005	IS	18000
19293	6/2/2005	BO	RE1	CT/INTI			2005	RM	19293
19500	7/6/2005	PN	RE2	Nationa Disabilities			2005	IS	19500
19646	6/17/2005	CR	RE2	Improvements on the Judicial Management Reform	FSO	CR-T1012	2005	RM	19646
19980	6/10/2005	BH	RE3	Social Safety Net Program Experiences	FSO	BH-T1005	2005	IS	19980
20000	2/1/2005	BR	RE1	Institutional Strengthening of Controlling Agencies	FSO	BR-T1026	2005	RM	20000
20000	3/10/2005	RS	SDS	Private Investment Obstacles: Options of Growth with Equity	FGE	RS-T1138	2005	PS	20000
20000	5/11/2005	SU	RE3	Support Suriname Country Strategy Paper -Development Policy Note on Indigenous	NSI	SU-T1015	2005	IS	20000
20000	7/18/2005	CH	RE1	Disabilities' Challenges in the Chilean Legislation and Policy	NSI	CH-T1009	2005	IS	20000
20000	8/15/2005	RG	INT	Youth Development in Latin America and the Caribbean	FSO	RG-T1181	2005	IS	20000
20000	11/15/2005	PE	RE3	Technical Note on Ethnic Groups and Social Exclusion in Peru	NSI	PE-T1029	2005	IS	20000
25000	1/3/2005	RS	SDS	Improving Disability Data in the Andean Region and the Caribbean	NSI	RS-T1123	2005	IS	25000

File Download

Some files can harm your computer. If the file information below looks suspicious, or you do not fully trust the source, do not open or save this file.

File name: Wizr.xls
 File type: Microsoft Excel Worksheet
 From: hrd

⚠ This type of file could harm your computer if it contains malicious code.

Would you like to open the file or save it to your computer?

Open Save Cancel More Info

Always ask before opening this type of file

Done

Start | Inbox - Microsoft O... | http://datawizr... | Microsoft PowerPoi... | 4:42 PM

Excel file generation

Microsoft Excel - Wizrd[2].xls

File DOCS Edit View Insert Format Tools Data Window WBI Help Acrobat

Arial 10 B I U

	A	B	C	D	E	F	G	H	I	J
1	AMT1	APR_DATE	COUNTRY	DEPARTMENT	ENGLISH_NAME	FUND1	OPERATION_NUMBER	PIPE_YEAR	SECTOR_CODE	USEQ
2	1100	08/25/2005	EC	RE3	Industrial Sinergy, BORSI - Colombia	FSO	EC-T1043	2005	PA	
3	4200	03/30/2005	EC	RE3	Support for the Creation of "Bolsa de Valores Sociales"	FSO	EC-T1039	2005	CM	
4	5000	05/12/2005	CH	RE1	Support to the General Comptroller Office of Chile	FSO	CH-T1007	2005	RM	
5	5800	03/11/2005	GU	RE2	Support Violence Prevention Program Training in Institutional and Operative	FSO	GU-T1023	2005	IS	
6	5996	01/11/2005	PN	RE2	Process of Road Fund Program Mainstreaming Gender in Water	FSO	PN-T1005	2005	TR	
7	7000	04/29/2005	RS	SDS	Management	NWP	RS-T1099	2005	PA	
8	8078	03/10/2005	PE	RE3	Boarder Crossing Points Training Visits Neighborhood Improvement	FSO	PE-T1018	2005	CE	
9	8500	07/25/2005	EC	RE3	Programas Study Tour by Ministry of Local Government,Community Development & Sport	FSO	EC-T1041	2005	IS	
10	10880	01/07/2005	JA	RE3	Monetary Transfers Program	FSO	JA-T1012	2005	RM	
11	11764	04/12/2005	PE	RE3	Programs of Districts Improvement	FSO	PE-T1020	2005	IS	
12	12000	01/21/2005	PR	RE1	Support for Consolidation of Fiscal Pact	FSO	PR-T1024	2005	DU	
13	12000	06/27/2005	GU	RE2	Operative Assistant RE1/F11	FSO	GU-T1031	2005	RM	
14	12300	08/08/2005	RS	RE1	Good Practices in Development	ITI	RS-T1192	2005	PS	
15	15000	02/11/2005	CH	RE1	Women and Democratic Governance in Latin America and the Caribbean	FSO	CH-T1006	2005	RM	
16	18000	07/18/2005	RS	SDS	CT/INTRA Assistance for the Judiciary Branch of Bolivia	NOW	RS-T1176	2005	IS	
17	19293	06/02/2005	BO	RE1	National Secretariat for the Social Inclusion of People with Disabilities	FSO	BO-T1028	2005	RM	
18	19500	07/06/2005	PN	RE2	Improvements on the Judicial Management Reform	FSO	PN-T1013	2005	IS	
19	19646	06/17/2005	CR	RE2	Social Safety Net Program Experiences	FSO	CR-T1012	2005	RM	
20	19980	06/10/2005	BH	RE3		FSO	BH-T1005	2005	IS	

Wizrd 2

Ready

Start | Inbox - ... | http://d... | Microsof... | Micros...

4:43 PM